



More time. . .
thanks to elka diversity & speed.

Sawn timber



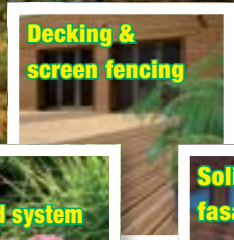
**Lightweight
wood based
panels**



Particleboards



**Decking &
screen fencing**



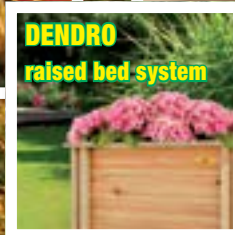
esb
elka strong board



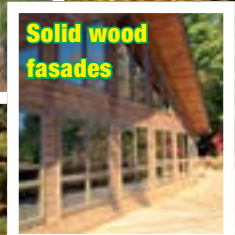
**Solid wood
boards**



**DENDRO
raised bed system**



**Solid wood
fasades**







Company founder Ludwig Kuntz



The sawmill at Kirn, 1903

Wood in the third generation

- lots of experience with wood

elka-Holzwerke GmbH already has a tradition, which extends back over more than 100 years and is in the third generation of family ownership. In 1903, Ludwig Kuntz, son of a sawmill owner from Homburg/Saar, Germany, leased a sawmill in Kirn located at the river Nahe. The company „Ludwig Kuntz, Dampfsägewerk und Holzhandlung in Kirn“ was entered in the commercial register for the first time on 12th November 1906. The sites in the Hunsrück region, more accurately in Morbach and Sohren, were added in 1908 and 1934 respectively.

In the first half of the last century, as well as the production of sawn timber, the mainstay of the company was the production of pit props. However, the company had also been producing windows, doors, parquet flooring and blockboard for several decades.

Today, with our approximately 230 employees, we concentrate on the two areas of core expertise - sawn timber and wood materials. High-quality natural wood boards in spruce and Douglas fir have been manufactured in the Kirn works since 1995. The production of natural wood honeycomb board was started in 2007. In the Sohren sawmill, which was modernised in 2001, we produce „sawn timber à la carte“, i.e. ranges of sawn timber to customers requirements regarding type of wood, quality, size and finish.

Following an extensive purchase of land, the first particleboard system was set up in the Morbach factory in 1961, and the factory was subsequently expanded over the following decades by the addition of several more systems. As well as the large range for the timber trade, more and more special boards, such as lightweight particleboards, were produced.

At the start of the 1980s, a completely new sawmill was built on former woodland. This was complemented by a number of product-finishing lines. Following its destruction by a huge fire on 16th April 2003, an ultra-modern bandsaw mill, which started production in the summer of 2004, was erected in the same spot. The main site at Morbach, which since 2003 has also housed the administration department and has been the company headquarters since 2012, today covers an area of almost 25 hectares.



Log transporter, 1933



The sawmill at Morbach, 1910

Transporting timber, 1905







Modern technology, prompt delivery

Good, fast and individual for your benefit

The elka-Holzwerke GmbH company philosophy means flexibility in all production areas with a matching organisation and short decision paths. For this purpose, dependable contacts are at our customers' beck and call for each of the diverse range of articles.

Enquiries and orders are always processed individually. elka-Logistik GmbH ensures rapid and smooth delivery by forwarding agents or our own vehicle fleet.

elka-Holzwerke's facilities are a particular indication of a medium-sized company of high technical expertise. For example, the chipping/bandsaw line, newly erected in 2004, is still one of the most modern in the whole of Germany. Complex electronic controls enable maximum capacity while at the same time maintaining the highest flexibility for large and small orders.

Our focus on the two product groups, particleboards and sawn timber, guarantees you a wide and combinable delivery range. Economic independence, short decision paths and motivated staff enable us to respond flexibly to market developments and to satisfy customers' requirements individually. In particular, small and medium-sized batch sizes, even of special products, are always being produced.

More time ... thanks to elka® diversity and speed.



elka®

A close-up photograph of a stack of logs. The central focus is the end of a log, which has a circular logo and the text 'REFC' stamped into it. The logo consists of a circle containing the letters 'R' and 'E'. The text 'REFC' is positioned below the logo. The wood is light-colored and shows natural grain patterns. The background is slightly blurred, showing other logs in the stack.

REFC



Wood in its natural state -

a certified fact

elka-Holzwerke GmbH is distinguished by ecological production and the manufacture of ecologically valuable products - with a high level of quality. As a wood processing company, we are directly dependent on the state of the forests and therefore pay close attention to environmental protection.

We obtain our raw timber from suppliers who are committed to the sustainability principles of the Pan European Forest Certification (PEFC) Council or the FSC. All products can therefore be offered with certificates if required.

For example, our understanding of resource-conserving production is the achievement of the highest possible timber yield - which is what the Morbach bandsaw mill is designed for - or the avoidance of unnecessary transportation. In Morbach, any wood, which is left over, is therefore processed directly into particleboard on the same site.

Our particleboards are produced from 100% fresh wood chips.

Particular importance is placed on ecology and high quality standards at elka sawmills.

We achieve this with the help of our modern production systems and our well-trained staff of many years standing. The quality control of our products (sawn timber, particleboard and solid wood boards) is CE certified.





Particleboards

Simply impressive - impressively simple for you

elka-Holzwerke GmbH produces solid wood boards from solid wood with natural knots in spruce and Douglas fir. They are available as 3-ply boards and impress in many applications with their technical and visual characteristics. For ease of use, we also offer tongue-and-groove profiles up to a maximum size of 505 x 205 cm.

Thanks to the unique combination of sawmill and particleboards production in one location and therefore the direct availability of leftover wood in house, elka-Holzwerke GmbH **produces its particleboards** from 100% fresh wood chips. These are not contaminated by residues and incur substantially lower tool costs, particularly due to the extremely low sand content.

Urea-formaldehyde-resin-bonded particleboards have a very light surface. Customers in the timber trade as well as in industrial veneering and laminating businesses therefore hold our products in very high regard, for example for the production of doors.

elka® has developed a better solution for the OSB board with the trend-setting branded product **esb (elka strong board)**. In the meantime, esb has been successfully introduced to the market as a unique breathable board made from 100% fresh wood chips with excellent technical advantages.

With „**elka-NF-easy**“, by combining a rectangular and conical cross section, we provide a tongue-and-groove profile, which produces an excellent fit and a high degree of joint stability. Particleboards can be provided with tongue-and-groove profiles in all standard formats as well as in individual intermediate sizes up to a maximum of 520 x 205 cm.

Special products with characteristics, which are individually matched to our customers' requirements, are produced from batch sizes of 200 m³. Our comprehensive trade range enables us to partner the timber frame and building materials industry. With drop-shipment business, you can always rely on our dealer loyalty.

Boards with a honeycomb middle layer and an MDF particleboard or solid wood top layer in thicknesses from 30 to 70 mm with a specific weight of 110 - 330 kg/m³ as well as lightweight particleboards in thicknesses of 25 - 60 mm and with a specific weight of approx. 500 kg/m³ are produced under the name **elka® take it easy.**



elka®





L. Michow & Sohn, Hamburg

Sawn timber -

a cut above the rest

Diversity and quality as well as the numerous finishing options for sawn timber products make elka-Holzwerke GmbH one of the leading sawmills in Germany.

Spruce, fir, Douglas fir, larch, pine and oak form the basis of our standard delivery program. The range extends from lumber, scantling and squared timber via planks and boards of all kinds (including planed products) to battens, frames and blocks.

Sawn timber, which is available in lengths up to 14.70 m, can be finished in any way the customer wishes:

- ✓ Artificial drying to approx. 15 - 20 %
- ✓ Heat treatment in accordance with IPPC specifications
- ✓ Planing of numerous profiles
- ✓ Coping at right angles +/- 2 mm
- ✓ Dip impregnation, green or yellow (free from heavy metals, fixing)
- ✓ Boiler pressure impregnation

The latest sales lines such as **elka®-Gardendreams** and **elka®-Solid wood Facades** are brand programs for the timber frame industry, which are future-proof in terms of quality and product development.

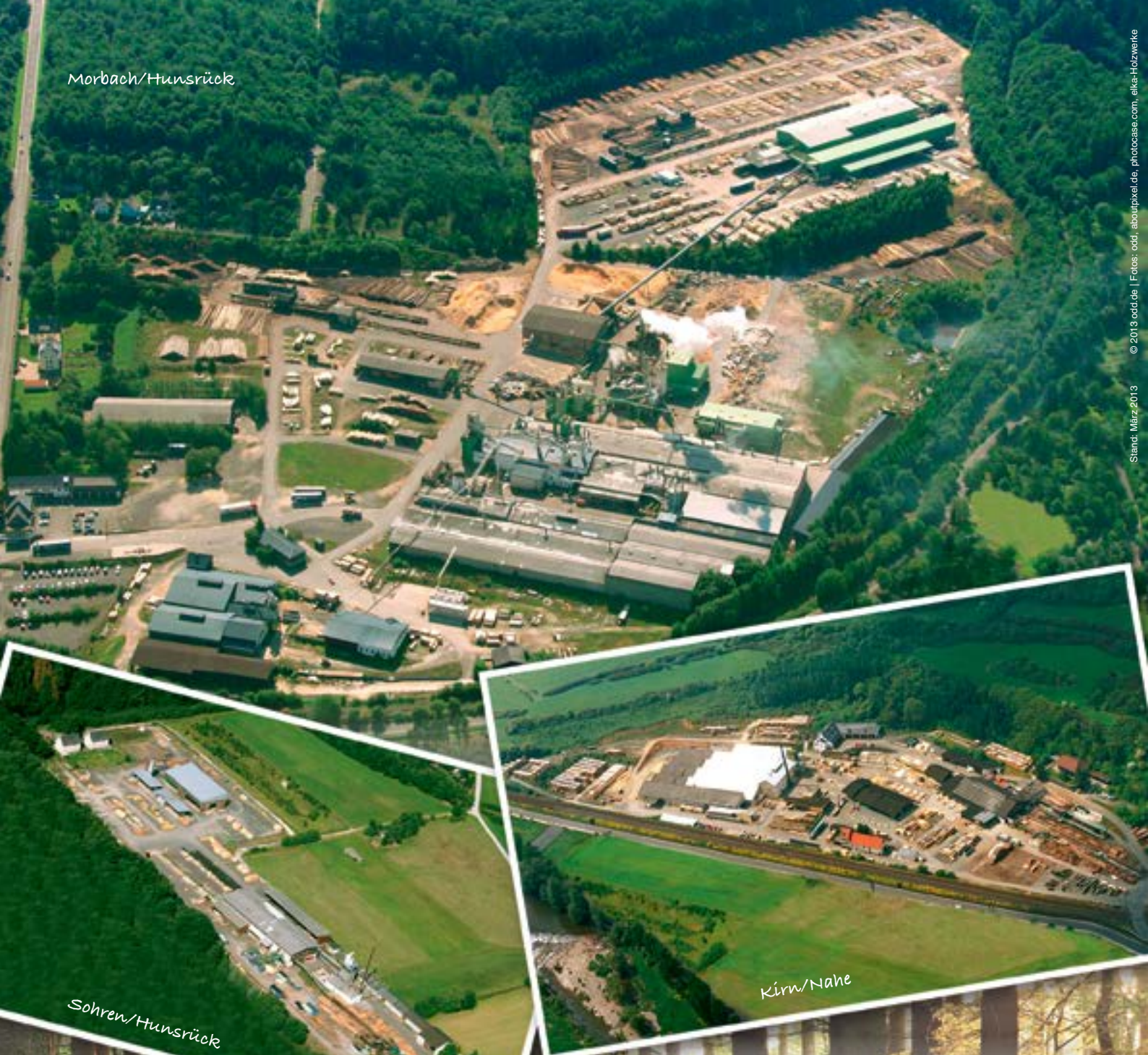
The combination of sawn timber products with one another and also in particular with particleboard and solid wood boards offers you advantages throughout the whole order handling process. Simply let us know what it is you want...



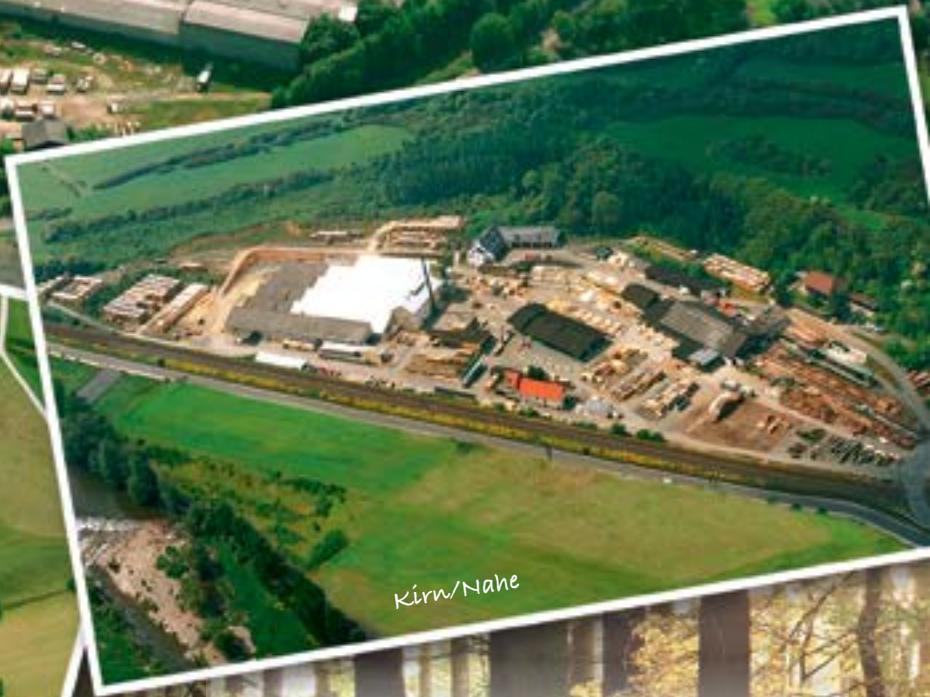
elka®-Gardendreams



Morbach/Hunsrück



Sohren/Hunsrück



Kirn/Nahe



elka-Holzwerke GmbH
Hochwaldstraße 44
D-54497 Morbach, Germany

Phone: +49 (0) 65 33 / 9 56-0
Fax: +49 (0) 65 33 / 9 56-220

E-Mail: info@elka-holzwerke.de
Internet: www.elka-holzwerke.eu

Locations:
Morbach/Hunsrück • Kirn/Nahe • Sohren/Hunsrück

elka®

www.elka-Holzwerke.eu